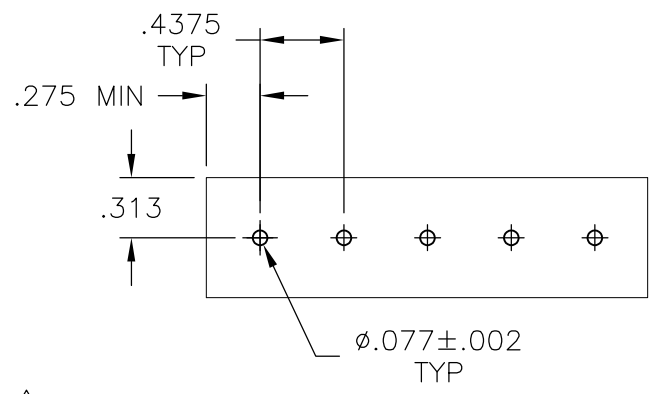
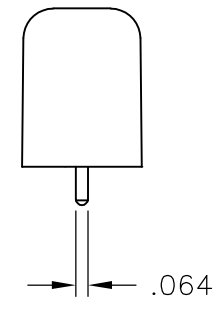
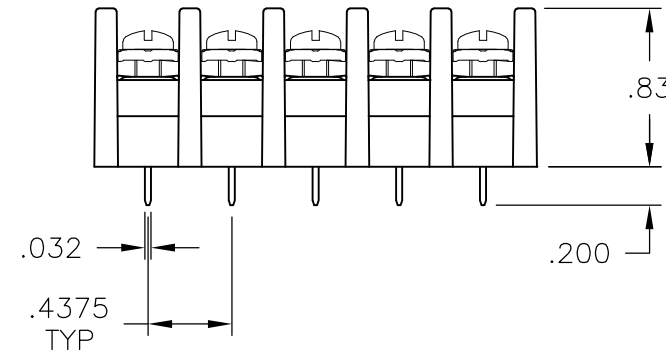
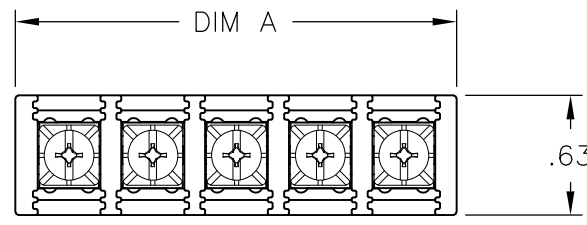


THIS DRAWING IS UNPUBLISHED. RELEASED FOR PUBLICATION
 © COPYRIGHT BY TYCO ELECTRONICS CORPORATION. ALL RIGHTS RESERVED.

LOC	DIST	REVISIONS					
FT	0	P	LTR	DESCRIPTION	DATE	DWN	APVD
				01 REVISED PER ECO-08-015877	01JUL08	HMR	FD



RECOMMENDED PCB LAYOUT

MATERIAL:
 HOUSING: THERMOPLASTIC, UL94V-2, BLACK.
 TERMINAL: BRASS, BRIGHT TIN PLATED.
 SCREWS: 6-32, STEEL, ZINC AND CHROMATE PLATED ¹
 OR
 NICKEL OVER COPPER PLATED ²

ELECTRICAL:
 MAXIMUM CURRENT: 20A.
 OPERATING VOLTAGE: 600V.
 WIRE RANGE: 12 AWG MAX.

ENVIRONMENT:
 OPERATING TEMP.: -60°C TO +105°C.

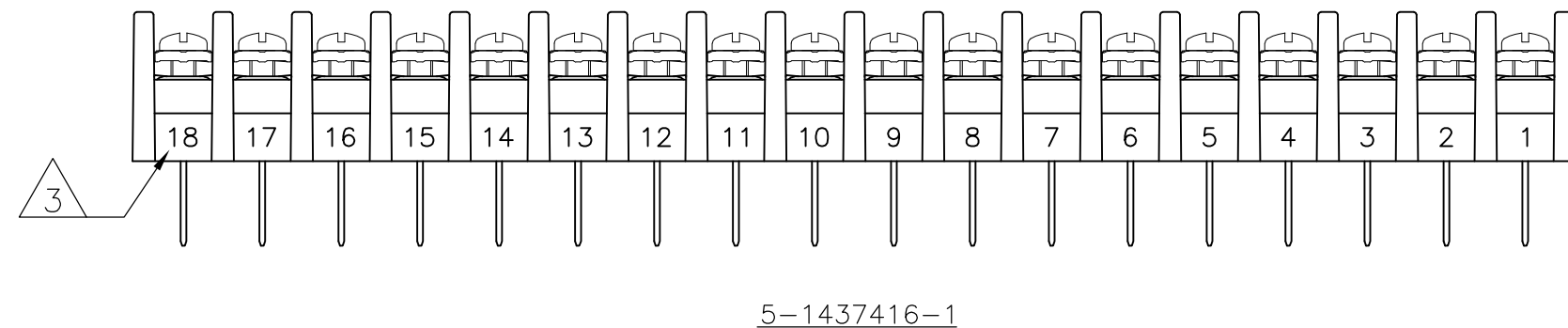
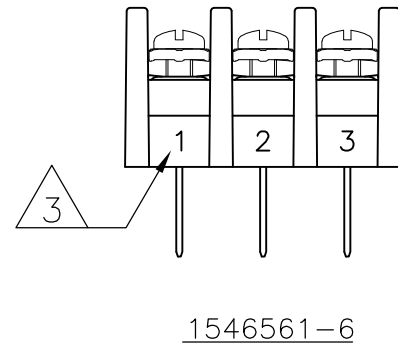
- ³ WHITE INK MARKING, APPROX. AS SHOWN. (SEE PAGE 2)
- ⁴ PRELIMINARY PART NUMBER.

¹	⁴	11.937	27	SSB7FP270202	2-1546984-7		
¹		11.500	26	SSB7FP260202	5-1437416-4		
¹		11.062	25	SSB7FP250202	5-1437416-3		
¹	⁴	10.625	24	SSB7FP240202	2-1546984-4		
¹	⁴	10.187	23	SSB7FP230202	2-1546984-3		
¹	⁴	9.750	22	SSB7FP220202	2-1546984-2		
¹	⁴	9.312	21	SSB7FP210202	2-1546984-1		
¹		8.875	20	SSB7FP200202	5-1437416-2		
¹	⁴	8.437	19	SSB7FP190202	1-1546984-9		
¹		8.000	18	SSB7FP18020212	5-1437416-1		
¹	⁴	8.000	18	SSB7FP180202	1-1546984-8		
¹		7.562	17	SSB7FP170202	5-1437416-0		
¹	⁴	7.125	16	SSB7FP160202	1-1546984-6		
¹		6.687	15	SSB7FP150202	4-1437416-7		
¹		6.250	14	SSB7FP140202	3-796602-3		
¹	⁴	5.812	13	SSB7FP130202	1-1546984-3		
¹		5.375	12	SSB7FP120202	4-1437416-1		
¹		4.937	11	SSB7FP110202	1-1546561-2		
¹		4.500	10	SSB7FP100202	3-1437416-5		
¹		4.062	9	SSB7FP090202	3-1437416-2		
¹		3.625	8	SSB7FP080202	2-1437416-8		
¹		3.187	7	SSB7FP070202	3-796602-2		
¹		2.750	6	SSB7FP060202	2-1437416-2		
¹		2.312	5	SSB7FP050202	1-1437416-7		
¹		1.875	4	SSB7FP040202	1-1437416-2		
²		1.437	3	SSB7FP0320911	3-1546561-9		
¹		1.437	3	SSB7FP03020211	1546561-6		
¹		1.437	3	SSB7FP030202	1437416-8		
¹		1.000	2	SSB7FP020202	1437416-4		
		DIM A	NO. OF POS.	CATALOG NUMBER	PART NUMBER		

THIS DRAWING IS A CONTROLLED DOCUMENT.		DWN	S SCHLGE	16FEB04	 Tyco Electronics Corporation Harrisburg, Pa 17105-3608		
DIMENSIONS: INCHES		CHK	S YODER	2/16/04			
TOLERANCES UNLESS OTHERWISE SPECIFIED:		APVD	S YODER	2/16/04			
0 PLC ± - 1 PLC ± - 2 PLC ± .02 3 PLC ± .010 4 PLC ANGLES ± - ± 1'		PRODUCT SPEC		NAME			
MATERIAL		APPLICATION SPEC		SSB7 ASSEMBLY			
		WEIGHT		SIZE	CAGE CODE	DRAWING NO	RESTRICTED TO
		-		A3	00779	C-3-796602-2	-
CUSTOMER DRAWING				SCALE	SHEET	REV	
				NTS	1 OF 2	01	

THIS DRAWING IS UNPUBLISHED. RELEASED FOR PUBLICATION
 © COPYRIGHT - BY TYCO ELECTRONICS CORPORATION. ALL RIGHTS RESERVED.

LOC	DIST	REVISIONS					
FT	0	P	LTR	DESCRIPTION	DATE	DWN	APVD
			-	SEE SHEET 1	-	-	-



THIS DRAWING IS A CONTROLLED DOCUMENT.		DWN	S SCHL GEL	16FEB04	 Tyco Electronics Corporation Harrisburg, Pa 17105-3608
DIMENSIONS: INCHES		CHK	S YODER	2/16/04	
		APVD	S YODER	2/16/04	
TOLERANCES UNLESS OTHERWISE SPECIFIED:		PRODUCT SPEC		NAME	
0 PLC ± - 1 PLC ± - 2 PLC ± .02 3 PLC ± .010 4 PLC ± - ANGLES ± 1°		APPLICATION SPEC		SSB7 ASSEMBLY	
MATERIAL		WEIGHT		SIZE	
-		-		A3 00779	
FINISH		CUSTOMER DRAWING		DRAWING NO	
-		-		G-3-796602-2	
		SCALE		RESTRICTED TO	
		NTS		-	
		SHEET		REV	
		2 OF 2		01	